



MICROTEC +

Micro Tufted Carpet Tile 100% Solution Dyed PA Yarns



Blue / Bleu 028



TecSOM CRÉATEUR FRANÇAIS
DE SOLS TEXTILES DEPUIS 1881





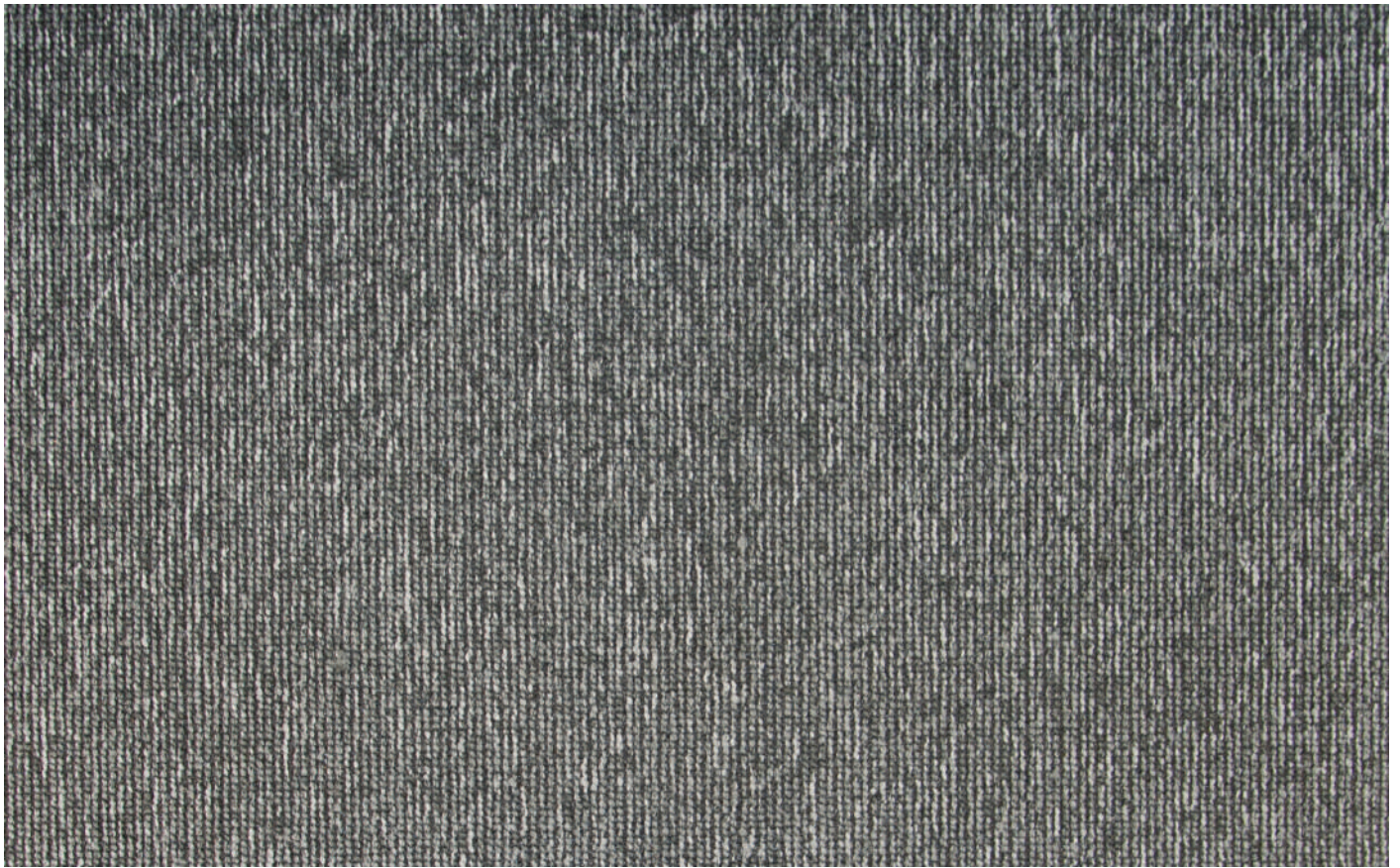
Microtec +



Red / Rouge 994



Microtec +



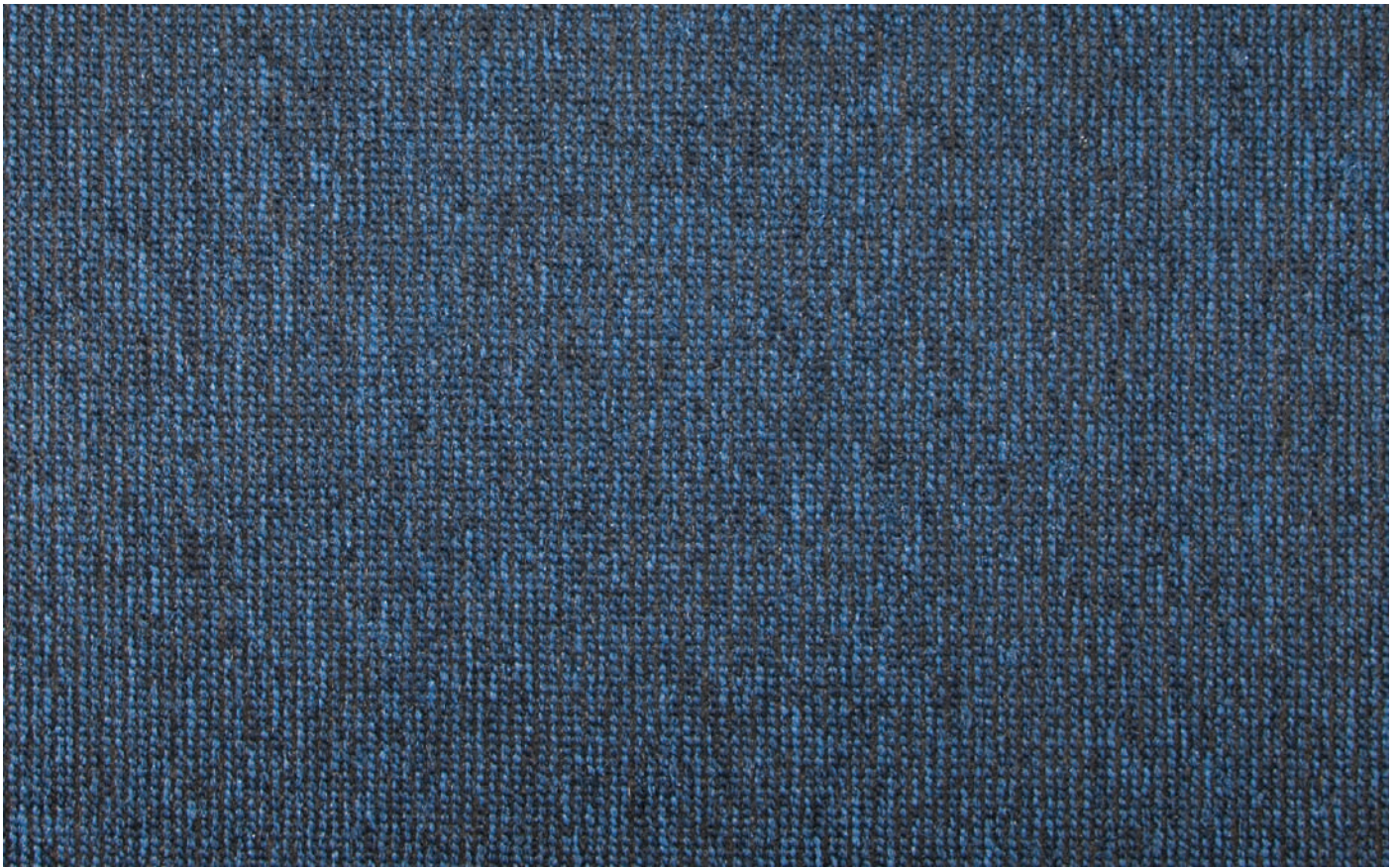
Medium Grey / Gris Moyen 036



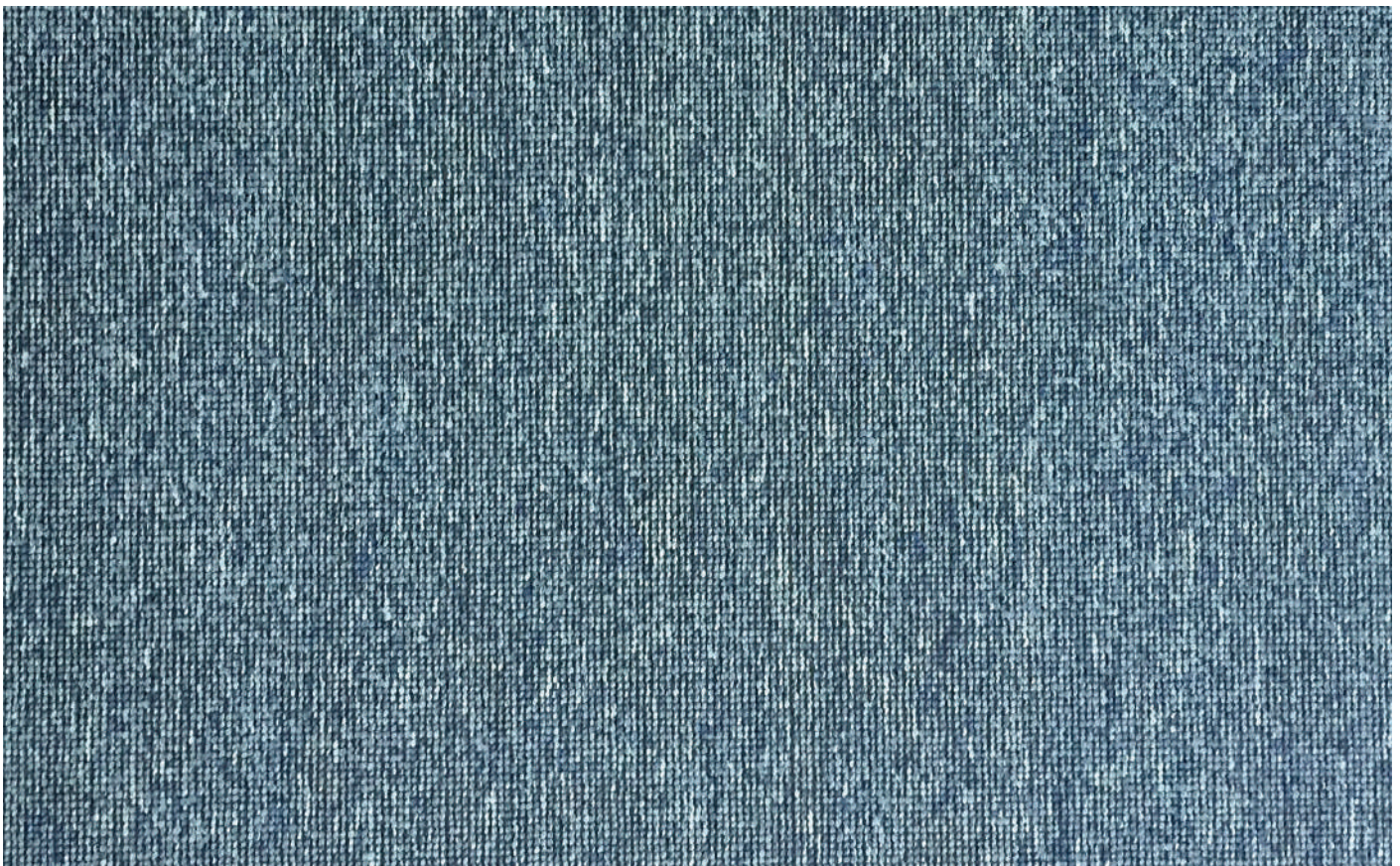
Black / Noir 149



Microtec +



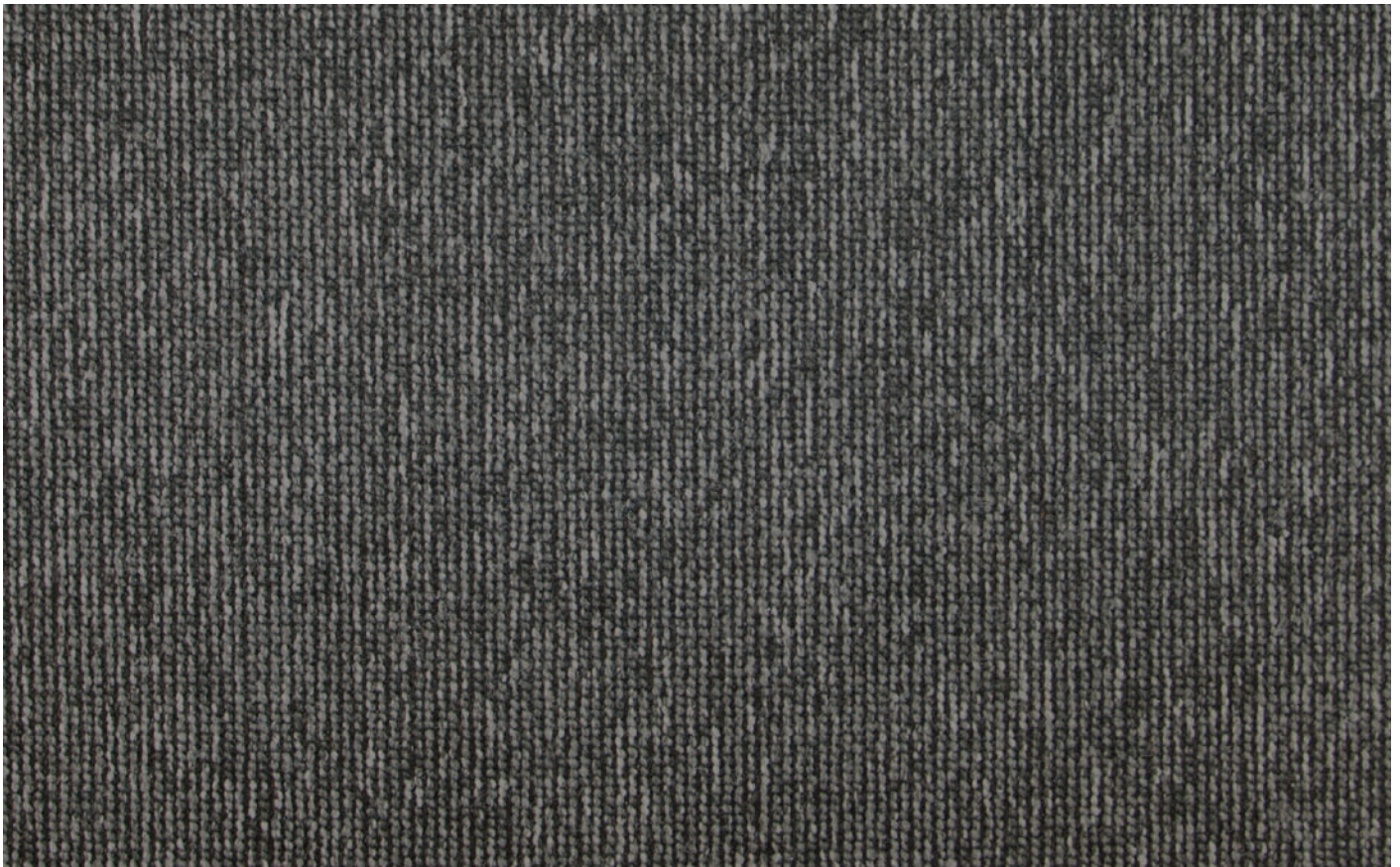
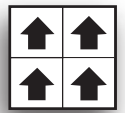
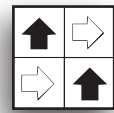
Blue / Bleu 028



Light Blue / Bleu Clair 923



Microtec +



Dark Grey / Gris Foncé 038



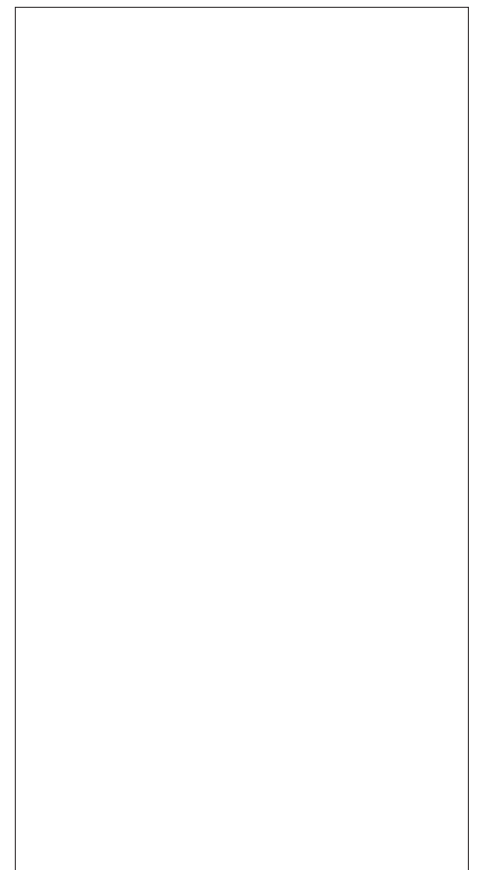
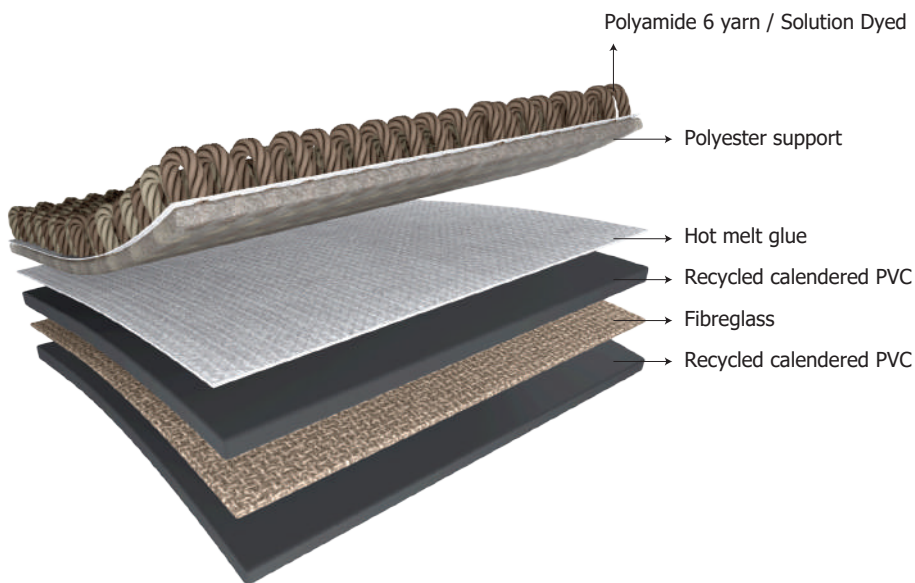
Brown / Marron 048



Microtec +



Beige / Beige 062



Heavy PVC Backing



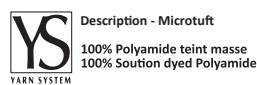
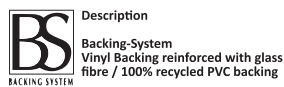
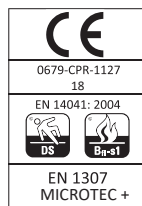
MICROTEC +

Micro Tufted Carpet Tile 100% Solution Dyed PA Yarns



SPECIFICATION

English	Français	Norm	Microtec+
Pile fibre	Composition fibreuse		100% Polyamide (Teint masse / Solution dyed)
Gauge	Jauge		1/10 Cut pile
Tuft density	Densité	ISO 1763	159,900 Stitches/m ²
Total pile mass	Poids de fil	ISO 8543	440 g/m ²
Total weight	Masse totale	ISO 8543	4370 g/m ²
Total thickness	Epaisseur totale	ISO 1765	6.0 mm
Primary backing	Premier dossier		Non tissé / Non woven primary backing
Backing	Envers		Matières recyclées renforcées par un voile de verre Vinyl backing reinforced with glass fiber (100% recycled PVC)
Reaction to fire	Comportement au feu	EN 13501-1	Bfl-s1
Castor chair test	Aptitude à la chaise à roulettes	EN 985	R ≥ 2.4
Impact sound reduction	Isolation acoustique aux bruits de chocs	ISO 717/2	16 dB
Sound absorption value	Absorption acoustique	ISO 11654	aw = 0.15 (H)
Thermal resistance	Résistance thermique	EN 10456	0.07 m ² K/W
Charging ability	Essai du marcheur	ISO 6356	≤2.0 kV
Electrostatic properties	Résistances électriques	ISO 10965	~10 ¹⁰ Ω
Light fastness	Solidité à la lumière	EN 105 - B02	7/8
Dimensional stability	Stabilité dimensionnelle	EN 986	≤ 0.10%
Tile size	Dimensions		50 x 50 cm
Tiles per box	Dalles par boîte		20 = 5m ²



Classification

✓		
33 (4)	32 (3)	31 (2+)
heavy	general	moderate



LEED

Répond à la démarche
HQE

